

# SECTION 5 STEERING SYSTEM

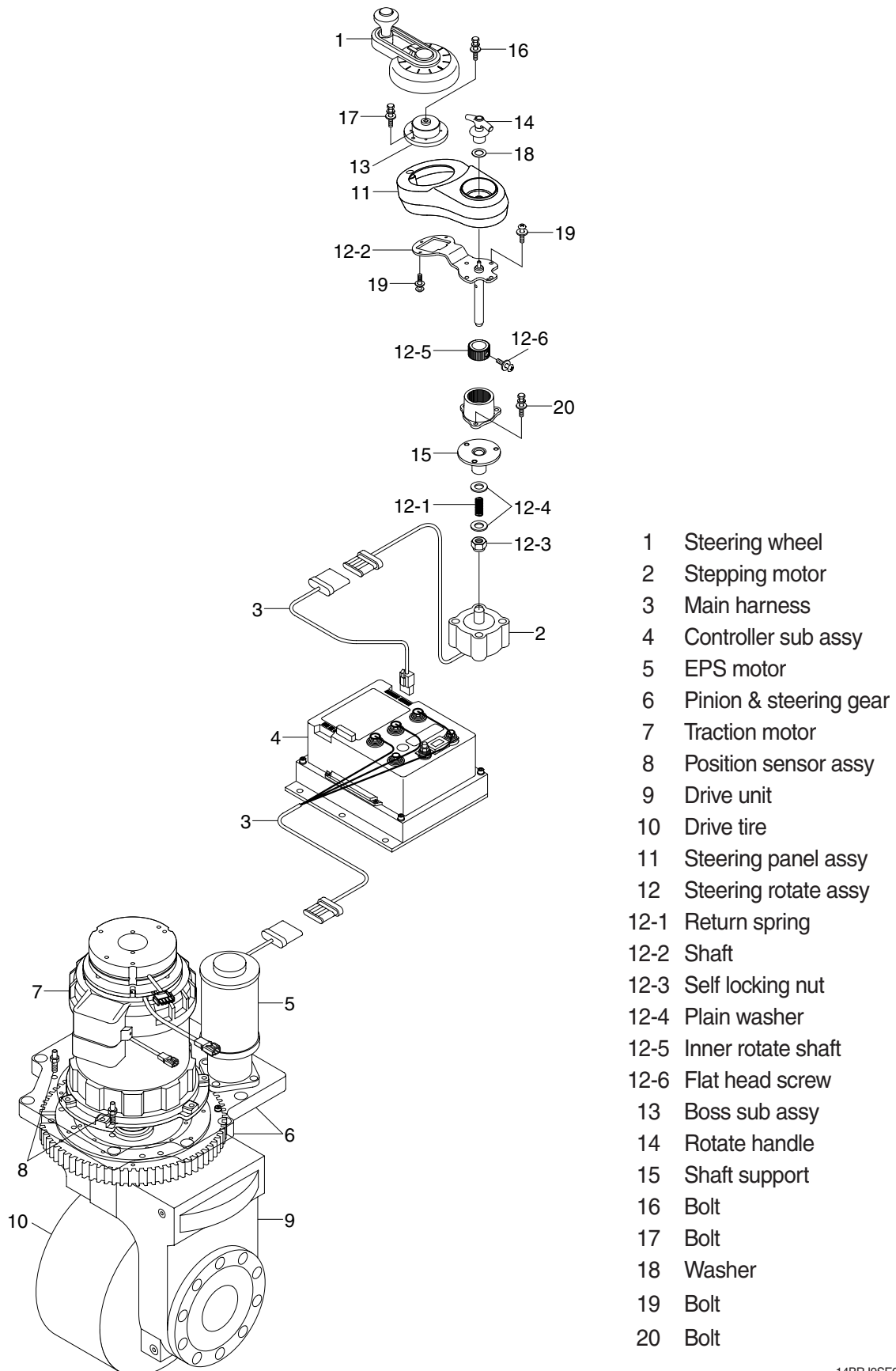


Group 1 Structure and function ..... 5-1

# SECTION 5 STEERING SYSTEM

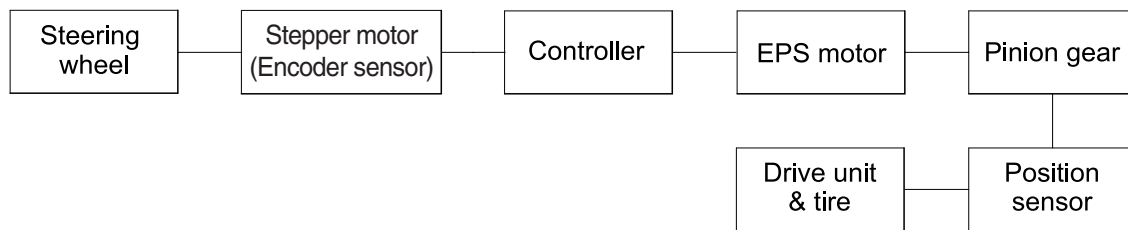
## GROUP 1 STRUCTURE AND FUNCTION

### 1. STRUCTURE



14BRJ9SE02

## 2. FUNCTION



BRJ7SE13

### 1) Steering wheel

- (1) It decides the direction of rotation of the truck.
- (2) It transmits the handling of operator.

### 2) Stepper motor

- (1) It is sensing the operation of steering wheel.
- (2) It is transmits the output signal to controller.

### 3) Controller

- (1) It decides the torque and the direction of rotation of motor.
- (2) It supplied power to motor.

### 4) EPS motor

- (1) It transmits torque to pinion gear.

### 5) Pinion gear

- (1) It increases torque to drive unit steering gear.

### 6) Position sensor

- (1) It is sensing angle of steering.
- (2) It transmits resistance to controller.

### 7) Tire

- (1) It is rotated by the transmitted torque.